

759 Lake Shore Blvd. (SR 283 at SR 44)

Industrial Building For Sale

Painesville Township, Ohio 44077 (Lake County)



Property Highlights:

- 21,240± SF Building
- 3.4± Acres with Room to Expand
- Single or Multi-tenant
- Twelve 14' h x 12' w Drive-In Doors
- Two Loading Docks with Levelers
- Metal Halide Shop Lighting
- 18' Clear Ceiling Height
- Outside Storage with Fenced Yard
- Easy Access to Highways
- Located at SR 44 Exit Ramp

Asking \$750,000.00



**Global Real Estate
Advisors Inc.**

Nancy Stark Zangerle

440.255.5552 x 229
Nancy@GlobalCommercialRE.com

Neil Sawicki, SIOR, Broker

440.255.5552 x 221
Neil@GlobalCommercialRE.com



GLOBAL

www.GlobalCommercialRE.com
8585 East Ave., Mentor, Ohio 44060

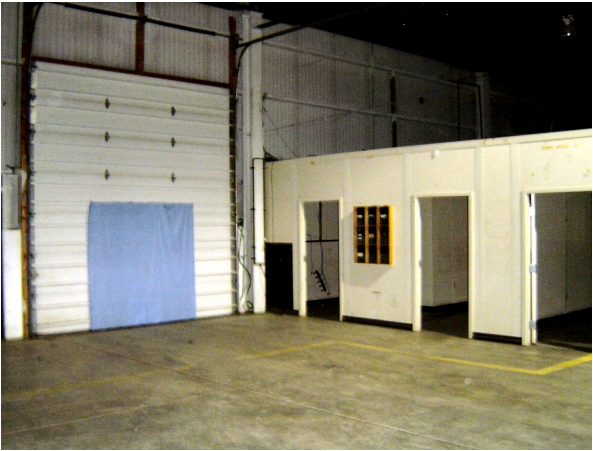
Real Estate Advisors Inc.
BROKER

This information has been secured from sources we believe are reliable, but we make no representations or warranties, expressed or implied, as to the accuracy of the information. References to condition, square footage or age are approximate. Buyer or Tenant acknowledges that they are relying on their own investigations and are not relying on Broker provided information. Procuring broker shall only be entitled to a commission, calculated in accordance with the rates approved by our principal only if such procuring broker executes a brokerage agreement acceptable to us and our principal and the conditions as set forth in the brokerage agreement are fully and unconditionally satisfied. Although all information furnished regarding property for sale, rental, or financing is from sources deemed reliable, such information has not been verified and no express representation is made nor is any to be implied as to the accuracy thereof and it is submitted subject to errors, omissions, change of price, rental or other conditions, prior sale, lease or financing, or withdrawal without notice and to any special conditions imposed by our principal.

759 Lake Shore Blvd. (SR 283 at SR 44)

Industrial Building For Sale

Painesville Township, Ohio 44077 (Lake County)



www.GlobalCommercialRE.com
8585 East Ave., Mentor, Ohio 44060

Real Estate Advisors Inc.
BROKER

**Global Real Estate
Advisors Inc.**

Nancy Stark Zangerle

440.255.5552 x 229
Nancy@GlobalCommercialRE.com

Neil Sawicki, SIOR, Broker

440.255.5552 x 221
Neil@GlobalCommercialRE.com

This information has been secured from sources we believe are reliable, but we make no representations or warranties, expressed or implied, as to the accuracy of the information. References to condition, square footage or age are approximate. Buyer or Tenant acknowledges that they are relying on their own investigations and are not relying on Broker provided information. Procuring broker shall only be entitled to a commission, calculated in accordance with the rates approved by our principal only if such procuring broker executes a brokerage agreement acceptable to us and our principal and the conditions as set forth in the brokerage agreement are fully and unconditionally satisfied. Although all information furnished regarding property for sale, rental, or financing is from sources deemed reliable, such information has not been verified and no express representation is made nor is any to be implied as to the accuracy thereof and it is submitted subject to errors, omissions, change of price, rental or other conditions, prior sale, lease or financing, or withdrawal without notice and to any special conditions imposed by our principal.