

# East 21st Street & Columbus Avenue Former School & Properties For Sale/Lease Ashtabula, Ohio 44004 (Ashtabula County)

**Call for Details**



East 21st Street & Columbus Avenue, Ashtabula, OH

## Property Features:

- Redevelopment Opportunity
- Prominent Location
- 29,644 SF One-Story Former School Building
- 2.75± Acres up to 10+ Acres Available
- Additional Community Center Building Available
- Fantastic Access to SR 11 and 5 Minutes to I-90
- Infrastructure & Curb Cuts in Place
- 1.2 miles from Ashtabula County Medical Center
- Potential for Assisted Living or Hospice Care
- Leasing with Qualified Tenants may be Considered



**Global Real Estate  
Advisors, Inc.**

**Nancy Stark Zangerle**  
440-255-5552 x 229  
216-316-0913 Cell  
Nancy@GlobalCommercialRE.com

**Neil Sawicki, SIOR, Broker**  
440-255-5552 x 221  
Neil@GlobalCommercialRE.com

[www.GlobalCommercialRE.com](http://www.GlobalCommercialRE.com)

8585 East Ave., Mentor, Ohio 44060

**Real Estate Advisors Inc.**  
BROKER



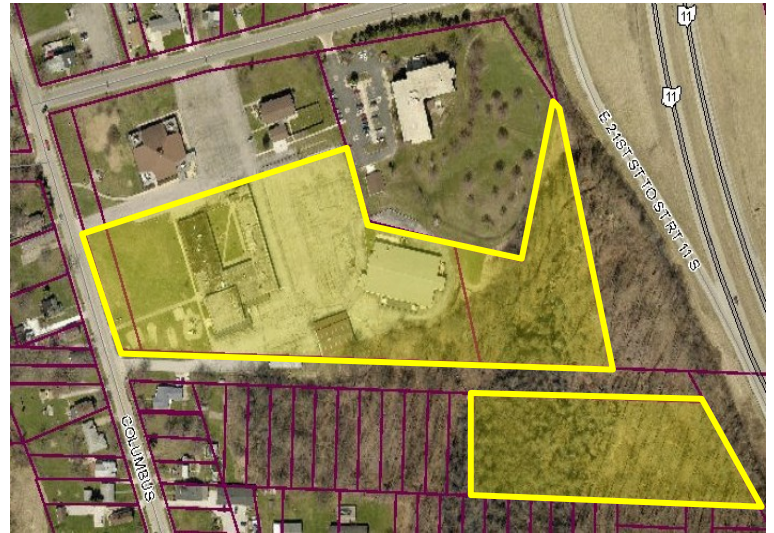
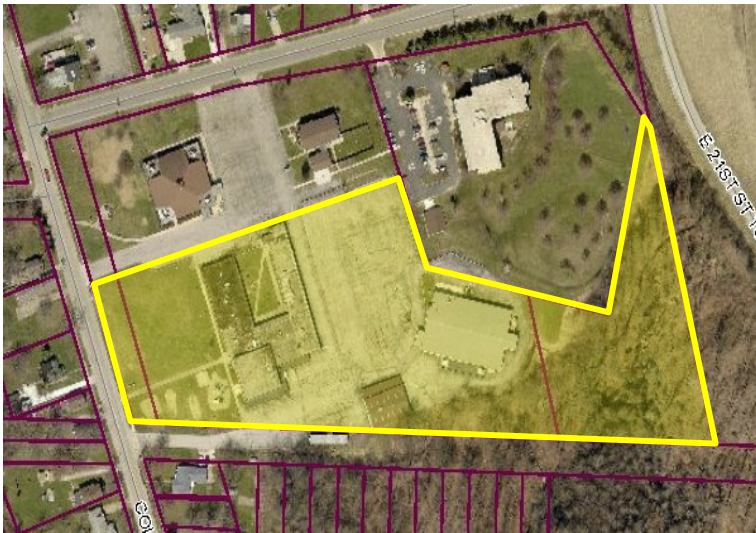
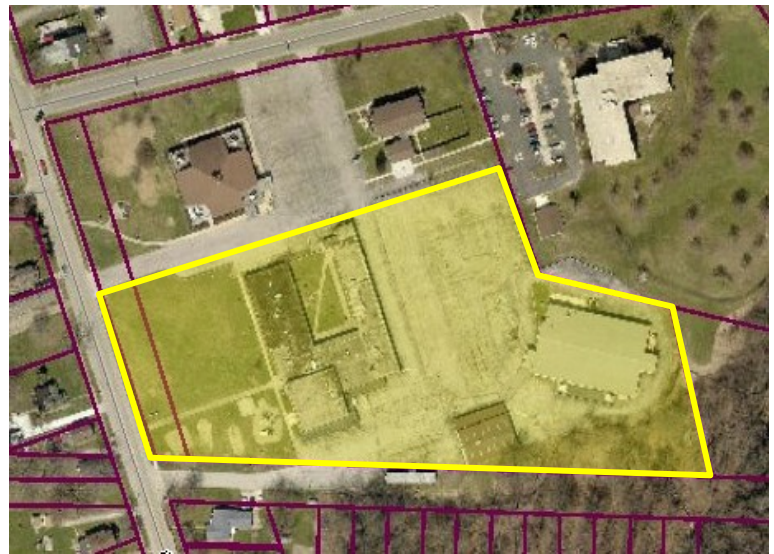
**GLOBAL**

This information has been secured from sources we believe are reliable, but we make no representations or warranties, expressed or implied, as to the accuracy of the information. References to condition, square footage or age are approximate. Buyer or Tenant acknowledges that they are relying on their own investigations and are not relying on Broker provided information. Procuring broker shall only be entitled to a commission, calculated in accordance with the rates approved by our principal only if such procuring broker executes a brokerage agreement acceptable to us and our principal and the conditions as set forth in the brokerage agreement are fully and unconditionally satisfied. Although all information furnished regarding property for sale, rental, or financing is from sources deemed reliable, such information has not been verified and no express representation is made nor is any to be implied as to the accuracy thereof and it is submitted subject to errors, omissions, change of price, rental or other conditions, prior sale, lease or financing, or withdrawal without notice and to any special conditions imposed by our principal.

# East 21st Street & Columbus Avenue

## Former School & Properties For Sale/Lease

Ashtabula, Ohio 44004 (Ashtabula County)



- Possible Property Configurations Above
- 5,000± SF Garage and 15,600± SF Community Center are also Available with School Property



[www.GlobalCommercialRE.com](http://www.GlobalCommercialRE.com)

8585 East Ave., Mentor, Ohio 44060

**Real Estate Advisors Inc.**  
BROKER

**Global Real Estate  
Advisors, Inc.**

**Nancy Stark Zangerle**

440-255-5552 x 229

216-316-0913 Cell

Nancy@GlobalCommercialRE.com

**Neil Sawicki, SIOR, Broker**

440-255-5552 x 221

Neil@GlobalCommercialRE.com

This information has been secured from sources we believe are reliable, but we make no representations or warranties, expressed or implied, as to the accuracy of the information. References to condition, square footage or age are approximate. Buyer or Tenant acknowledges that they are relying on their own investigations and are not relying on Broker provided information. Procuring broker shall only be entitled to a commission, calculated in accordance with the rates approved by our principal only if such procuring broker executes a brokerage agreement acceptable to us and our principal and the conditions as set forth in the brokerage agreement are fully and unconditionally satisfied. Although all information furnished regarding property for sale, rental, or financing is from sources deemed reliable, such information has not been verified and no express representation is made nor is any to be implied as to the accuracy thereof and it is submitted subject to errors, omissions, change of price, rental or other conditions, prior sale, lease or financing, or withdrawal without notice and to any special conditions imposed by our principal.