

34916 Ridge Road

Office Suite with Storeroom For Lease

Willoughby, Ohio 44094 (Lake County)



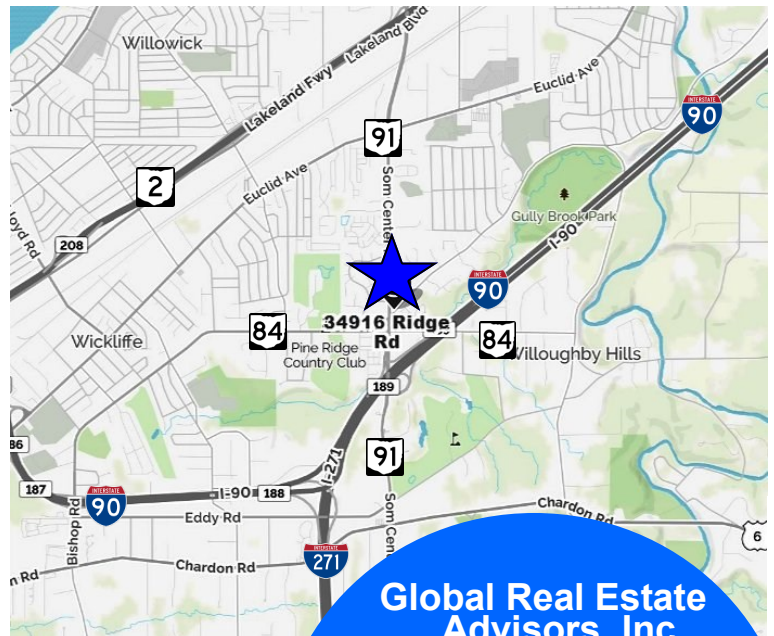
34916 Ridge Road, Willoughby, Ohio 44094

Property Features:

- 1,200± SF Office Suite with Three Generous Private Furnished Offices
- Large Open Reception plus Three Cubicles
- Private Kitchenette
- ADA Restroom
- Closets for Storage
- Excellent Access to SR 84, SR 91, Interstate 90 and Interstate 271

Lease Price \$13.00 psf NNN

**Additional 2,100± SF Storeroom/
Warehouse Available**



**Global Real Estate
Advisors, Inc.**

Nancy Stark Zangerle
440-255-5552 x 229
216-316-0913 Cell

Nancy@GlobalCommercialRE.com

Neil Sawicki, SIOR, Broker
440-255-5552 x 221
Neil@GlobalCommercialRE.com



www.GlobalCommercialRE.com

8585 East Ave., Mentor, Ohio 44060

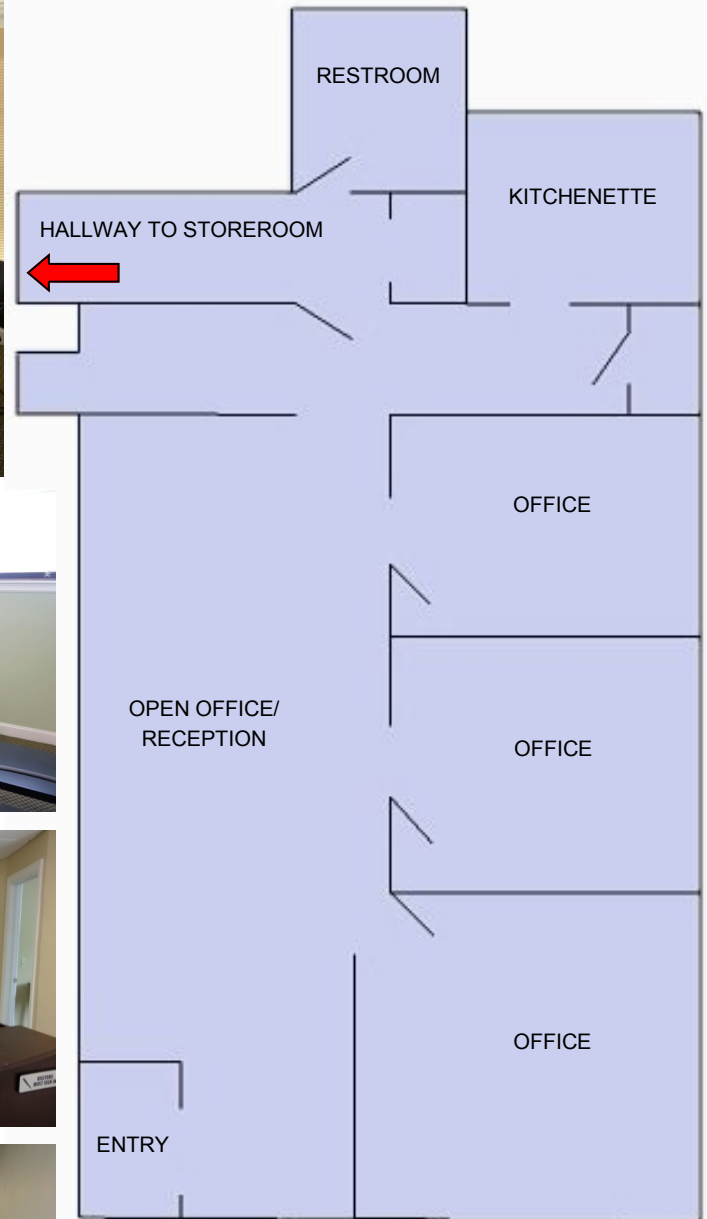
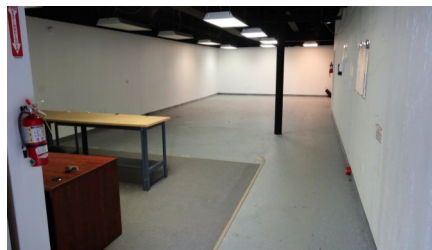
Real Estate Advisors Inc.
BROKER

This information has been secured from sources we believe are reliable, but we make no representations or warranties, expressed or implied, as to the accuracy of the information. References to condition, square footage or age are approximate. Buyer or Tenant acknowledges that they are relying on their own investigations and are not relying on Broker provided information. Procuring broker shall only be entitled to a commission, calculated in accordance with the rates approved by our principal only if such procuring broker executes a brokerage agreement acceptable to us and our principal and the conditions as set forth in the brokerage agreement are fully and unconditionally satisfied. Although all information furnished regarding property for sale, rental, or financing is from sources deemed reliable, such information has not been verified and no express representation is made nor is any to be implied as to the accuracy thereof and it is submitted subject to errors, omissions, change of price, rental or other conditions, prior sale, lease or financing, or withdrawal without notice and to any special conditions imposed by our principal.

34916 Ridge Road

Office Suite with Storeroom For Lease

Willoughby, Ohio 44094 (Lake County)



www.GlobalCommercialRE.com

8585 East Ave., Mentor, Ohio 44060

Real Estate Advisors Inc.
BROKER

**Global Real Estate
Advisors, Inc.**

Nancy Stark Zangerle

440-255-5552 x 229

216-316-0913 Cell

Nancy@GlobalCommercialRE.com

Neil Sawicki, SIOR, Broker

440-255-5552 x 221

Neil@GlobalCommercialRE.com

This information has been secured from sources we believe are reliable, but we make no representations or warranties, expressed or implied, as to the accuracy of the information. References to condition, square footage or age are approximate. Buyer or Tenant acknowledges that they are relying on their own investigations and are not relying on Broker provided information. Procuring broker shall only be entitled to a commission, calculated in accordance with the rates approved by our principal only if such procuring broker executes a brokerage agreement acceptable to us and our principal and the conditions as set forth in the brokerage agreement are fully and unconditionally satisfied. Although all information furnished regarding property for sale, rental, or financing is from sources deemed reliable, such information has not been verified and no express representation is made nor is any to be implied as to the accuracy thereof and it is submitted subject to errors, omissions, change of price, rental or other conditions, prior sale, lease or financing, or withdrawal without notice and to any special conditions imposed by our principal.