

207 North Maple Street - State Route 45  
**4.3± Acres Zoned Residential**  
Orwell, Ohio 44076 (Ashtabula County)



**Property Features:**

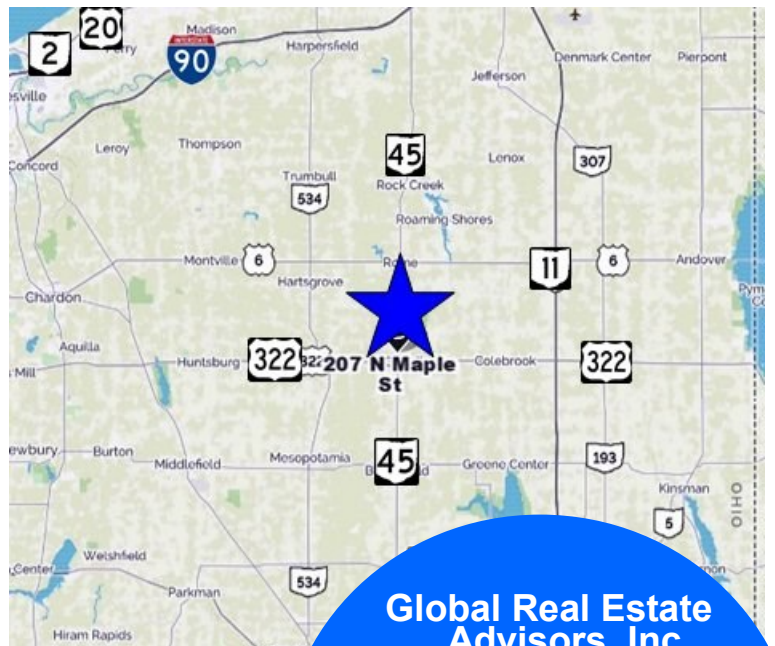
- 4.3± Acres - Vacant Land
- PP#'s 390121006200 & 390121006300
- Zoned R - Residential
- Adjacent to American Legion Post #719
- Situated on State Route 45 near State Route 322
- Located in Orwell Township
- Village Income Tax Rate 1%
- City Water & Sewer

**Listed Price - \$225,000.00**

**Contact Neil Sawicki**

**440-255-5552 Ext. 221 Office**

**440-339-8585 Cell**



**Global Real Estate  
Advisors, Inc.**

**Neil Sawicki, SIOR, Broker**

**440-255-5552 x 221**

**440-339-8585 Cell**

**Neil@GlobalCommercialRE.com**



**[www.GlobalCommercialRE.com](http://www.GlobalCommercialRE.com)**

**8585 East Ave., Mentor, Ohio 44060**

**Real Estate Advisors Inc.**  
**BROKER**

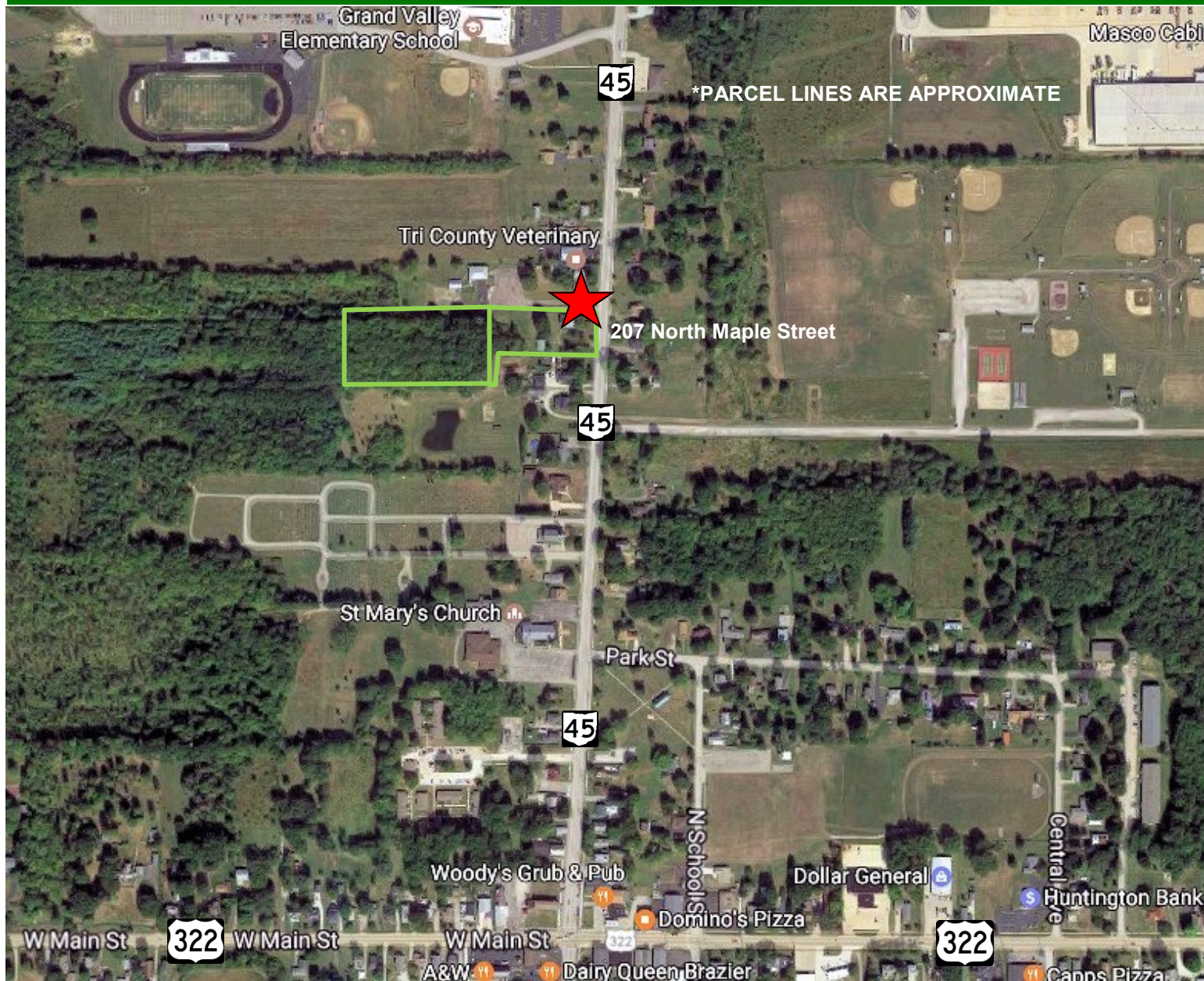
This information has been secured from sources we believe are reliable, but we make no representations or warranties, expressed or implied, as to the accuracy of the information. References to condition, square footage or age are approximate. Buyer or Tenant acknowledges that they are relying on their own investigations and are not relying on Broker provided information. Procuring broker shall only be entitled to a commission, calculated in accordance with the rates approved by our principal only if such procuring broker executes a brokerage agreement acceptable to us and our principal and the conditions as set forth in the brokerage agreement are fully and unconditionally satisfied. Although all information furnished regarding property for sale, rental, or financing is from sources deemed reliable, such information has not been verified and no express representation is made nor is any to be implied as to the accuracy thereof and it is submitted subject to errors, omissions, change of price, rental or other conditions, prior sale, lease or financing, or withdrawal without notice and to any special conditions imposed by our principal.



207 North Maple Street - State Route 45

**4.3± Acres Zoned Residential**

Orwell, Ohio 44076 (Ashtabula County)



[www.GlobalCommercialRE.com](http://www.GlobalCommercialRE.com)

8585 East Ave., Mentor, Ohio 44060

**Real Estate Advisors Inc.**  
BROKER

**Global Real Estate  
Advisors, Inc.**

**Neil Sawicki, SIOR, Broker**

**440-255-5552 x 221**

**440-339-8585 Cell**

[Neil@GlobalCommercialRE.com](mailto:Neil@GlobalCommercialRE.com)

This information has been secured from sources we believe are reliable, but we make no representations or warranties, expressed or implied, as to the accuracy of the information. References to condition, square footage or age are approximate. Buyer or Tenant acknowledges that they are relying on their own investigations and are not relying on Broker provided information. Procuring broker shall only be entitled to a commission, calculated in accordance with the rates approved by our principal only if such procuring broker executes a brokerage agreement acceptable to us and our principal and the conditions as set forth in the brokerage agreement are fully and unconditionally satisfied. Although all information furnished regarding property for sale, rental, or financing is from sources deemed reliable, such information has not been verified and no express representation is made nor is any to be implied as to the accuracy thereof and it is submitted subject to errors, omissions, change of price, rental or other conditions, prior sale, lease or financing, or withdrawal without notice and to any special conditions imposed by our principal.