

Greenbriar Lane, Everwood Way (Just Off Townline Road)

11.69± Acres Residential Development

Whispering Pines Subdivision Phase 2

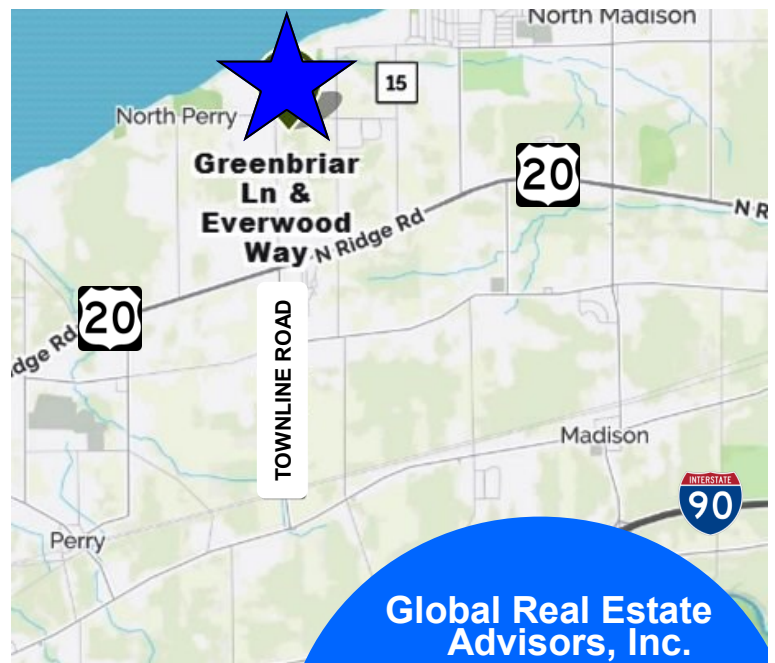
Madison Township, Ohio 44057 (Lake County)



Property Features:

- 11.69± Acres
- All Utilities Available
- Situated North of SR 20 off Townline Road
- Everwood Way Stubbed and Ready for Phase 2
- Most Lots in Subdivision Phase 1 Sold for \$59,900.00
- 21 Potential Lots
- Madison Township, Ohio
- Growing Area with Many Amenities Close By

Sale Price \$160,000.00



www.GlobalCommercialRE.com

8585 East Ave., Mentor, Ohio 44060

Real Estate Advisors Inc.
BROKER

**Global Real Estate
Advisors, Inc.**

Neil Sawicki, SIOR, Broker

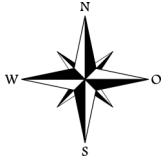
440-255-5552 x 221

440-339-8585 Cell

Neil@GlobalCommercialRE.com

This information has been secured from sources we believe are reliable, but we make no representations or warranties, expressed or implied, as to the accuracy of the information. References to condition, square footage or age are approximate. Buyer or Tenant acknowledges that they are relying on their own investigations and are not relying on Broker provided information. Procuring broker shall only be entitled to a commission, calculated in accordance with the rates approved by our principal only if such procuring broker executes a brokerage agreement acceptable to us and our principal and the conditions as set forth in the brokerage agreement are fully and unconditionally satisfied. Although all information furnished regarding property for sale, rental, or financing is from sources deemed reliable, such information has not been verified and no express representation is made nor is any to be implied as to the accuracy thereof and it is submitted subject to errors, omissions, change of price, rental or other conditions, prior sale, lease or financing, or withdrawal without notice and to any special conditions imposed by our principal.

Greenbriar Lane, Everwood Way (Just Off Townline Road)
11.69± Acres Residential Development
Whispering Pines Subdivision Phase 2
 Madison Township, Ohio 44057 (Lake County)

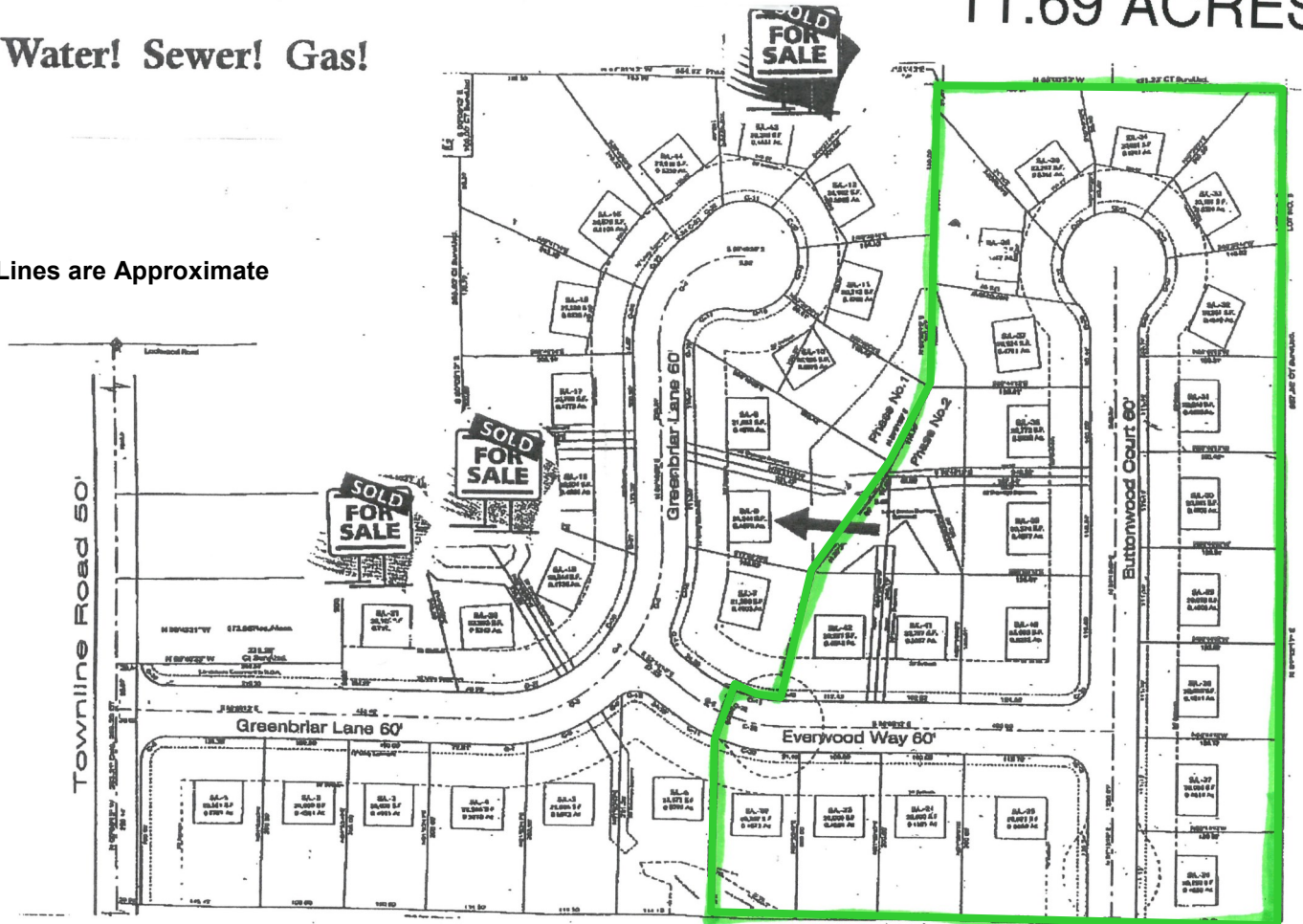


Whispering Pines Subdivision

11.69 ACRES

City Water! Sewer! Gas!

*Parcel Lines are Approximate



MADISON TOWNSHIP



www.GlobalCommercialRE.com

8585 East Ave., Mentor, Ohio 44060

Real Estate Advisors Inc.
 BROKER

**Global Real Estate
 Advisors, Inc.**

Neil Sawicki, SIOR, Broker

440-255-5552 x 221

440-339-8585 Cell

Neil@GlobalCommercialRE.com

This information has been secured from sources we believe are reliable, but we make no representations or warranties, expressed or implied, as to the accuracy of the information. References to condition, square footage or age are approximate. Buyer or Tenant acknowledges that they are relying on their own investigations and are not relying on Broker provided information. Procuring broker shall only be entitled to a commission, calculated in accordance with the rates approved by our principal only if such procuring broker executes a brokerage agreement acceptable to us and our principal and the conditions as set forth in the brokerage agreement are fully and unconditionally satisfied. Although all information furnished regarding property for sale, rental, or financing is from sources deemed reliable, such information has not been verified and no express representation is made nor is any to be implied as to the accuracy thereof and it is submitted subject to errors, omissions, change of price, rental or other conditions, prior sale, lease or financing, or withdrawal without notice and to any special conditions imposed by our principal.