

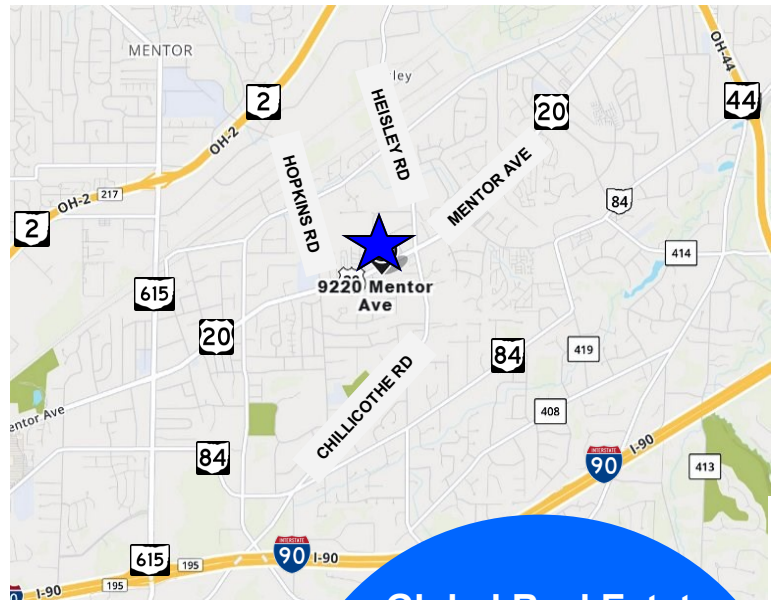
**Office/Retail Space For Lease**  
**6,400± SF - 4 Units Can Be Combined**  
**9250 - 9258 Mentor Avenue (SR 20) "Beacon Health Campus"**  
**Mentor, Ohio 44060 (Lake County)**



**9250-9258 Mentor Avenue, Mentor, OH 44060**

**Property Features:**

- Beacon Health Campus - 9220 Mentor Avenue  
~Available Suites:
  - 9250 Mentor Avenue - 1,600± SF
  - 9254 Mentor Avenue - 1,600± SF
  - 9256 Mentor Avenue - 1,600± SF
  - 9258 Mentor Avenue - 1,600± SF
- Can Easily Be Combined
- Each Unit is 20'x80' with ADA Restrooms
- Parking Located in Front & Rear of Building
- Located Adjacent to the New Meiers Grocery Store and Across from Staples, Bob Evans and Walmart
- Easy Access to Heisley Road with a Traffic Signal onto Mentor Avenue (SR 20)
- Lighted Digital Display Available for Advertising
- Below Market Rents



**Global Real Estate  
Advisors, Inc.**

**Neil Sawicki, SIOR, Broker**

**440-255-5552 x 221**

**440-339-8585 Cell**

**Neil@GlobalCommercialRE.com**



**[www.GlobalCommercialRE.com](http://www.GlobalCommercialRE.com)**

**8585 East Ave., Mentor, Ohio 44060**

**Real Estate Advisors Inc.**  
**BROKER**

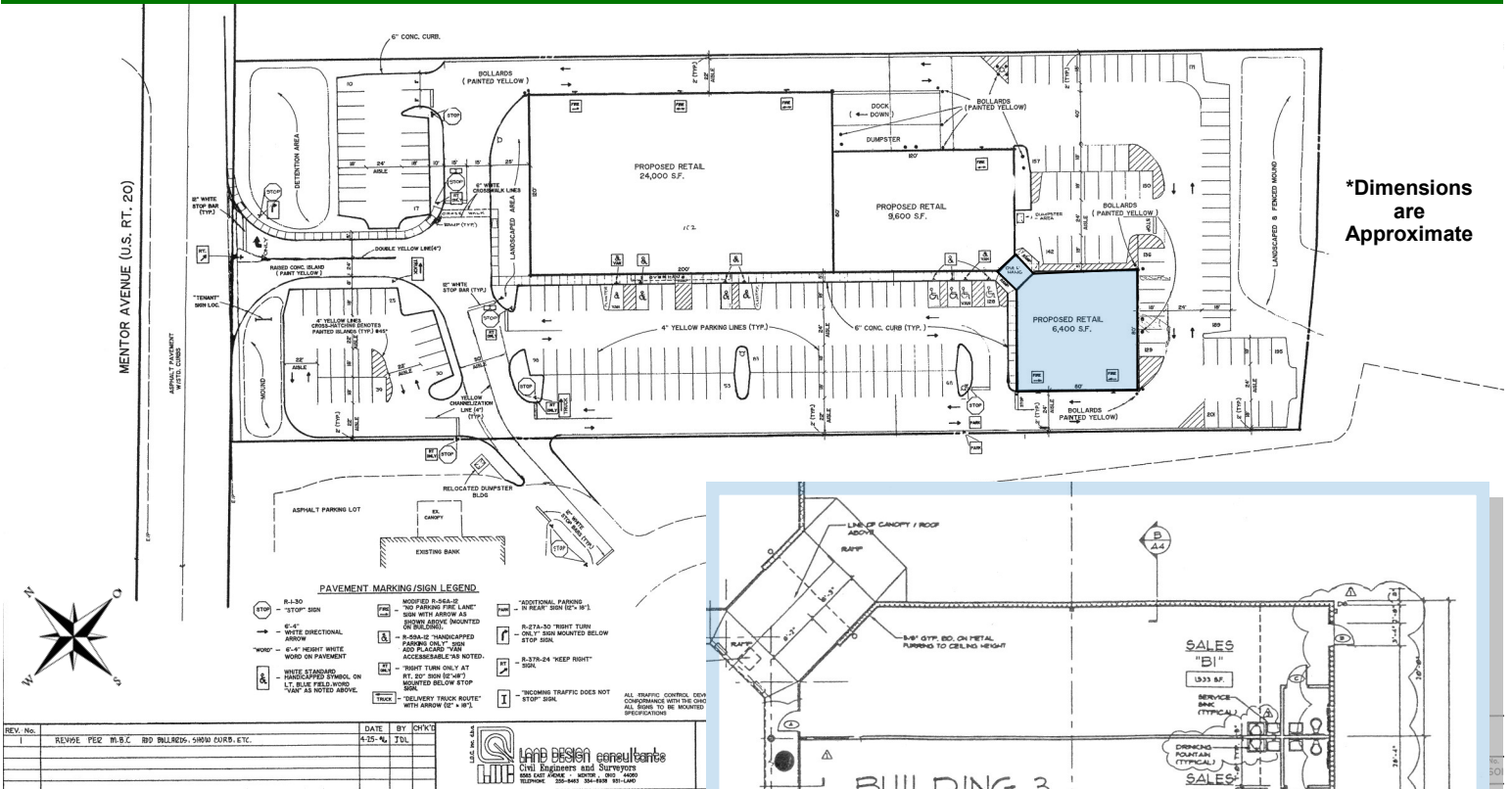
This information has been secured from sources we believe are reliable, but we make no representations or warranties, expressed or implied, as to the accuracy of the information. References to condition, square footage or age are approximate. Buyer or Tenant acknowledges that they are relying on their own investigations and are not relying on Broker provided information. Procuring broker shall only be entitled to a commission, calculated in accordance with the rates approved by our principal only if such procuring broker executes a brokerage agreement acceptable to us and our principal and the conditions as set forth in the brokerage agreement are fully and unconditionally satisfied. Although all information furnished regarding property for sale, rental, or financing is from sources deemed reliable, such information has not been verified and no express representation is made nor is any to be implied as to the accuracy thereof and it is submitted subject to errors, omissions, change of price, rental or other conditions, prior sale, lease or financing, or withdrawal without notice and to any special conditions imposed by our principal.

# Office/Retail Space For Lease

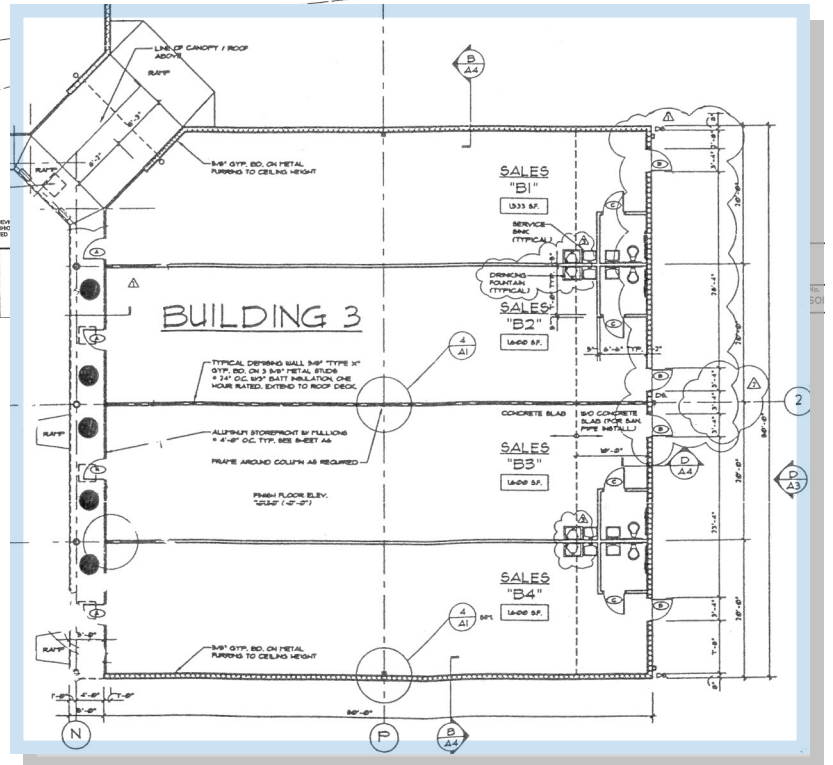
## 6,400± SF - 4 Units Can Be Combined

### 9250 - 9258 Mentor Avenue (SR 20) "Beacon Health Campus"

#### Mentor, Ohio 44060 (Lake County)



\*Dimensions are Approximate



**For Additional Information Contact:**

**Neil Sawicki**  
440-255-5552 Ext. 221  
440-339-8585 Cell



[www.GlobalCommercialRE.com](http://www.GlobalCommercialRE.com)

8585 East Ave., Mentor, Ohio 44060

**Real Estate Advisors Inc.**  
BROKER

**Global Real Estate Advisors, Inc.**

Neil Sawicki, SIOR, Broker

440-255-5552 x 221

440-339-8585 Cell

Neil@GlobalCommercialRE.com

This information has been secured from sources we believe are reliable, but we make no representations or warranties, expressed or implied, as to the accuracy of the information. References to condition, square footage or age are approximate. Buyer or Tenant acknowledges that they are relying on their own investigations and are not relying on Broker provided information. Procuring broker shall only be entitled to a commission, calculated in accordance with the rates approved by our principal only if such procuring broker executes a brokerage agreement acceptable to us and our principal and the conditions as set forth in the brokerage agreement are fully and unconditionally satisfied. Although all information furnished regarding property for sale, rental, or financing is from sources deemed reliable, such information has not been verified and no express representation is made nor is any to be implied as to the accuracy thereof and it is submitted subject to errors, omissions, change of price, rental or other conditions, prior sale, lease or financing, or withdrawal without notice and to any special conditions imposed by our principal.